



Together for a safer world

Accessories

Magnetic Particle Inspection



Accessories for Magnetic Particle Inspection

Whether you are looking to add to your range or replace outdated items, we have impressive line-up of MPI accessories and test components designed to satisfy your every inspection need. If you want help choosing the right accessory, please contact us.

Test Pieces

MAGNETIC FIELD TEST BAR

Contains coarse and fine surface and subsurface defects in both directions. Meets or exceeds most industrial and military standards for artificial test specimens; complies with MIL-STD-271.

PART NUMBER: 189838



AS 5282 TEST RING

A magnetic particle test piece with pre-drilled holes to simulate subsurface defects. For more information, see the Product Data Sheet for this test piece.

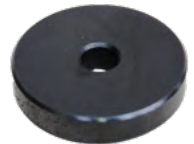
PART NUMBER: 026T005



REFERENCE BLOCK TYPE 1 ACCORDING TO EN ISO 9934-2

After rinsing with test liquid, the test block displays the extent to which the test liquid is able to deliver indications. Tested in accordance with EN ISO 9934-2. Supplied with certificate and reference picture. For more information, see the Product Data Sheet for this test block.

PART NUMBER: 026T042 / 135012



REFERENCE BLOCK TYPE 2

Use the reference block type 2 to evaluate the sensitivity of your magnetic ink. Tested in accordance with EN ISO 9934-2. Supplied with certificate and reference picture. For more information, see the Product Data Sheet for this test block.

PART NUMBER: 135013



Accessories for Magnetic Particle Inspection

Field Indicators

CALIBRATED FIELD INDICATORS

Rugged, pocket-size meters, supplied with certification. For more information, see the Product Data Sheet for this product..

PART NUMBERS

20 Gauss: 105645 10 Gauss: 505056



DISPOSABLE MAGNETIC FIELD INDICATORS

An inexpensive, disposable, non-calibrated magnetic field indicator. No certification. For more information, see the Product Data Sheet for this product.

PART NUMBER: 2480



ASME FIELD INDICATOR

Designed in accordance with ASME Boiler and Pressure Vessel Code Section V, Article 7. For more information, see the Product Data Sheet for this product.

PART NUMBER: 008M003



MAGNETIC INDICATOR STRIPS

These strips help determine the direction of magnetic fields at their precise location. They comply with EN-ISO 9934-1:2001.

PART NUMBERS

Type I for general use: 008M004 Type II for aerospace work: 008M005

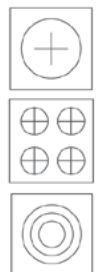


QUANTITATIVE QUALITY INDICATORS (QQI™)

QQI test pieces are used to verify field direction and relative strength. They also balance multi-directional fields and increase productivity by minimising magnetising shots. For more information, see the Product Data Sheet.

PART NUMBERS

KSC-230 Standard QQI: 519630
KSC-4-230 Miniature QQI: 519631
KSCT-234 Variable Depth QQI: 519632



Accessories for Magnetic Particle Inspection

Monitoring Devices

QB2-PLUS QUICK BREAK TESTER AND SHOT-TIMER

The QB2-Plus provides a quantitative verification of Quick Break function and measures the duration of the magnetising shot. The QB2-Plus can verify the correct function of AC, HWDC, and FWDC equipment, and verify Quick Break function on 3-phase FWDC units. Shot time and Quick Break voltage are alternately shown on the LCD display after each reading.

PART NUMBER: 628989



DIGITAL CALIBRATION KIT

Our lightweight and fully-portable digital amperage meter is specifically designed for NDT applications and can be used to certify amperage on MPI equipment up to 10,000 Amps. It checks AC, HWDC, 1 Phase FWDC, and 3 Phase FWDC, is accurate to + 3% at level, and meets ASTM E1444 and ANSI Z-540 specifications

PART NUMBER: 005M133



MP-1 RESIDUAL FIELD STRENGTH METER

The MP-1 meter detects residual fields up to 20 A/cm in ferro-magnetic parts and shows polarity. No calibration needed. Comes with a carrying bag and one probe.

PART NUMBERS

MP-1 meter: 133010 Calibration block for MP-1: 133011



FSM-2 MAGNETIC FIELD STRENGTH METER

The FSM-2 is used for tangential measuring of the magnetic field strength in DC and AC fields. A tangential field probe is attached to the workpiece's surface during magnetisation, and the hall sensor measures the voltage change produced by the magnetic field. For more information and part numbers, see the Product Data Sheet for this meter.



TEST KIT FOR MAGNETIC PARTICLE INSPECTION

One each of the following, supplied in a carry case::

- FSM-2 meter with tangential field probe and mains adapter **OR** MP-1 meter
- Reference block for FSM-2 or MP-1 (optional)
- Disposable, non-calibrated magnetic field indicator
- UV-Intensity meter J 221
- Reference block type 2
- Centrifuge tube

PART NUMBERS

MPI test kit with FSM-2 meter: 135057 MPI test kit with MP-1 meter: 135052



Accessories for Magnetic Particle Inspection

Magnetic Coils

L10 ELECTROMAGNETIC COIL

The L10 electromagnetic coil is specifically designed to detect transverse defects in shafts, spindles and similar components. It can inspect parts up to 250 mm (10") diameter. For more information, see the Product Data Sheet for this coil..

PART NUMBER: 008C020



CLOSED MAGNETISING COIL

Number of turns: 3

PART NUMBERS

Clearance Ø 200mm: 129001 Ø 350mm: 129002 Ø 500mm: 129003



HINGED COIL

With easy-to-operate locking handle. Number of turns: 3

PART NUMBERS

Clearance Ø 200mm: 129020 Ø 350mm: 129021 Ø 500mm: 129022



Yoke Test Lift Weight

AC Test Lift Weight (4.5Kg)

PART NUMBER

026T018B



Centrifuge Tubes

Use our 100 ml Centrifuge tubes to monitor the bath concentration and level of contamination in your magnetic particle baths. They are designed in accordance with ASTM D96-73 standard and conform to ASTM E-709-80.

PART NUMBERS

For visible ink: 044C003 For fluorescent ink: 044C005 Stand only: 044C004



Accessories for Magnetic Particle Inspection

Connectors

MAGNET ELECTRODES

For connection to high current cables.

PART NUMBERS

Type DIX PM 70 with lug connector - for powerpacks with a test current up to 6,000 A: 129102

Magnet cross contact with lug connector (12 pieces required): 129103



MELT-OFF ELECTRODES

To be fixed at handles and connected to high current cables.

PART NUMBERS

Type A (up to 1500 A): 129110 Type B (1500 - 3000 A): 129111 Type C (3100 - 8000 A): 129112

Handles for installation of the melt-off electrodes, consisting of one handle with control cable and one handle without control cable: 056200



Conductors and Adaptors

TWIN-CORE THREADED BARS

Laminated twin-core threaded bars for internal conductor/current induction method, according to ISO 9934-1:2016. Available as plastic covered or steel covered.

PART NUMBERS

Adaptor that fits our MAG-40 bench units: 030C035

Adaptor that fits our MAG-50 bench units: 030C009



SMALL PARTS ADAPTORS

Our auxiliary adaptors enable our standard bench units to test small parts. Mounted directly to either the head or tail stock, the solid copper adaptors maintain adequate clearance to proper clamping action.

PART NUMBERS

Fits our MAG-40 bench units: 030C035

Fits our MAG-50 bench units: 030C009



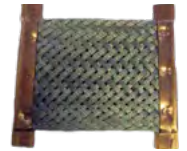
Accessories for Magnetic Particle Inspection

Contact Pads and Plates

CONTACT PADS

Our contact pads and plates prevent arc burn by maintaining proper electrical contact between test parts and contact heads. Available in a variety of sizes, they are manufactured to fit most MPI units.

Part number	Model	Area (mm)	Material
031C003	MAG 50	145 x 125	Copper braid, neoprene
031C010	MAG II/20	45 x 65	Copper braid
031C012	MAG II/20F	60 x 65	Brass mesh
031C016	MAG 40 series	100 x 120	Brass mesh
031C020	MAG 50 series	145 x 125	Copper braid



CONTACT PLATES

Our copper contact plates are designed for use with stationary crack detection systems or Universal systems types 100, 150, 200, etc. They are made from spirally-inserted copper braid cord with a tinned contact area. For more information and part numbers, see the Product Data Sheet for these products.



COPPER BRAID

Copper braid to make special contacts. Available in different lengths. For more information and part numbers, see the Product Data Sheet for this product.



STEADY RESTS

Steady-rests support and stabilise long or heavy parts – such as crankshafts – during the MPI inspection process. Our rail and headstock-mounted roller-style steady-rests support a variety of part lengths and make the loading of heavy and long parts easier.

PART NUMBERS

Moveable Steady Rest: 20955A3 Headstock Steady Rest: 20978A1



Accessories for Magnetic Particle Inspection

Sprayers

PORTABLE TEST LIQUID PUMP

Complete with container and hand hose. Capacity: 8 litres. Power supply: 3 x 400 V (circuit breaker), 230 V available on request. Output quantity: 25 litres per minute at 3 m throughput height or 40 litres per minute at 2 m throughput height.

PART NUMBER: 129410



MOBILE TEST LIQUID PUMP

Includes light metal drip tray to recollect test liquid to container. Spraying via hand hose. Capacity: 8 litres. Power supply: 3 x 400 V (circuit breaker), 230 V available on request. Output quantity: 25 litres per minute at 3 m throughput height or 40 litres per minute at 2 m throughput height.

PART NUMBER: 129415



STATIONARY TEST LIQUID PUMP

Stainless steel container. Pump with cover that can be easily removed. Spraying via hand hose. Capacity: 40 litres. Power supply: 3 x 400 V (circuit breaker). Output quantity: 25 litres per minute at 8 m throughput height. Applicable standards and specifications: EN 60204-1:2006, DIN EN ISO 9934-3:2002, DIN VDE 0100-410:2007, DIN VDE 0100-540:2012.

PART NUMBER: 129420



MAGNAGLO APPLICATOR

Replacement nozzle for bath applications; easily attaches to a 1/2" bore hose.

PART NUMBER: 004G006



POLYSPRAY

An inexpensive spray unit for applying penetrant.

PART NUMBER: 004G004



POWDER APPLICATOR

A lightweight powder "puffer" for applying dry powder developer. Removable cap for easy refilling.

PART NUMBER: 008D003

